

DOOSAN

Construction Equipment

Electric Excavator System



Electric Excavator System



Unrivalled Specialties!

Robust Performance

- Low-noise, low-vibration, environmentally-friendly, high-efficiency electric motor

Economical

- Lower yearly operational costs compared to diesel engine

Quality and Durability Superior to Rival Models

- Scalable electric control system
- Reinforcing post for structural rigidity
- PNCT cable
- Unique design and fabrication for optimum weight

Customized Solutions

- Meets the full range of applications for which users intend to operate the machine.
- Meets the specific needs of the operating radius.
- Meets the specific needs of works for which users intend to operate the machine.

Differentiated Customer Satisfaction

- One-stop customer management system

Higher Degree of Operational Safety

- Protected PNCT cable
- Double safety system prevents movement beyond the distance limit
- Slip ring of detachment prevention structure

PERFORMANCE & ECONOMIC COST

QUALITY & RELIABILITY

Equipped with a Robust Performance, High-efficiency Electric Motor

- Low noise of 45-55dB compared to diesel-powered engines
- Carbon-free, environmentally-friendly power source



Model	Motor specifications
DX140	90kw (122ps) 4P TE-F
DX220/225	110kw (150ps) 4P TE-F
DX300	160kw (218ps) 4P TE-F
DX340	185kw (251ps) 4P TE-F
DX380/420	225kw (306ps) 4P TE-F
DX480/520	270kw (367ps) 4P TE-F

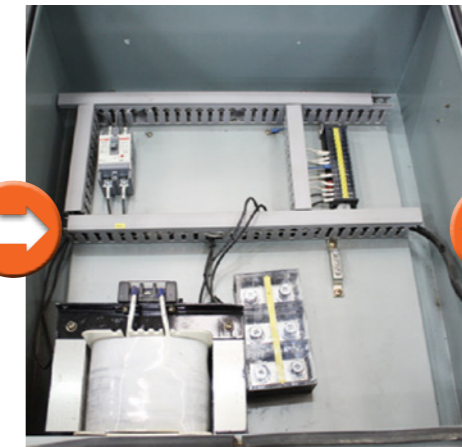
* The above motor specifications can be changed due to local electricity conditions and are subject to change without notice. Please contact your local distributor for more information.

Scalable Electric Control System

- Minimizes the motor load by means of SCR.
- Extends the pump's life cycle.
- Protects the motor by preventing over current, phase reversal, and low voltage.
- Vibration minimized during operation due to installation of the main electrical equipment on the outer parts of the excavator.
- Wired/wireless control of the control panel, joint box and the controller allows the operator to immediately perceive the distance warning signal, swiveling warning signal, power break signal and emergency power breaking.
- Adoption of high-efficiency slip ring enables robust power transmission and enhances control signal transmission.



Control panel
For main power supply



Joint box
Equipped with wireless communication



Excavator controller
Displays warning information and emergency power shutoff

Reduces Operating Costs compared to Diesel Engines

Powerful, High-efficiency, Eco-friendly Electric Motor

Low Noise / Low Vibration

Reduced noise by the improvement of ventilation structure and FAN shape as well as increased stiffness via structural analysis. Vibration reduced by reducing mechanical and electrical force.

Outstanding Motor Durability

Improve durability and environmental integrity, Increase bearing life time with grease injection structure. Increase Life time of Motor coil with high quality material.

Reduced Operating Costs, Environmental Protection

Operating costs reduced by 60% compared to engine-operated excavators. Powerful performance with greater economy. No engine oil or oil filters required.

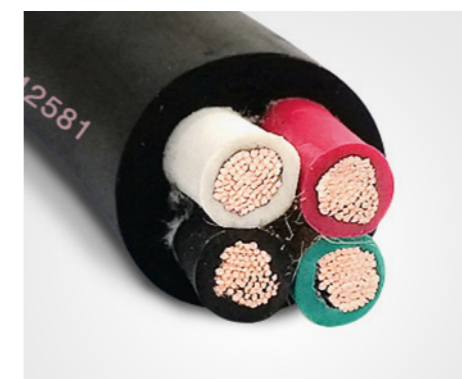


Reliability guaranteed through Rigidity and Durability



Reinforcing Post with Hexagonal Structure

- Enhanced appearance based on structural analysis (Patent application filed for a design utility model)
- Use of high-strength special steel
- Equipped with an impact absorber



PNCT Cable of Yielding Material

- Durability and safety enhanced by adoption of 4-wire PNCT cable and wireless communication.



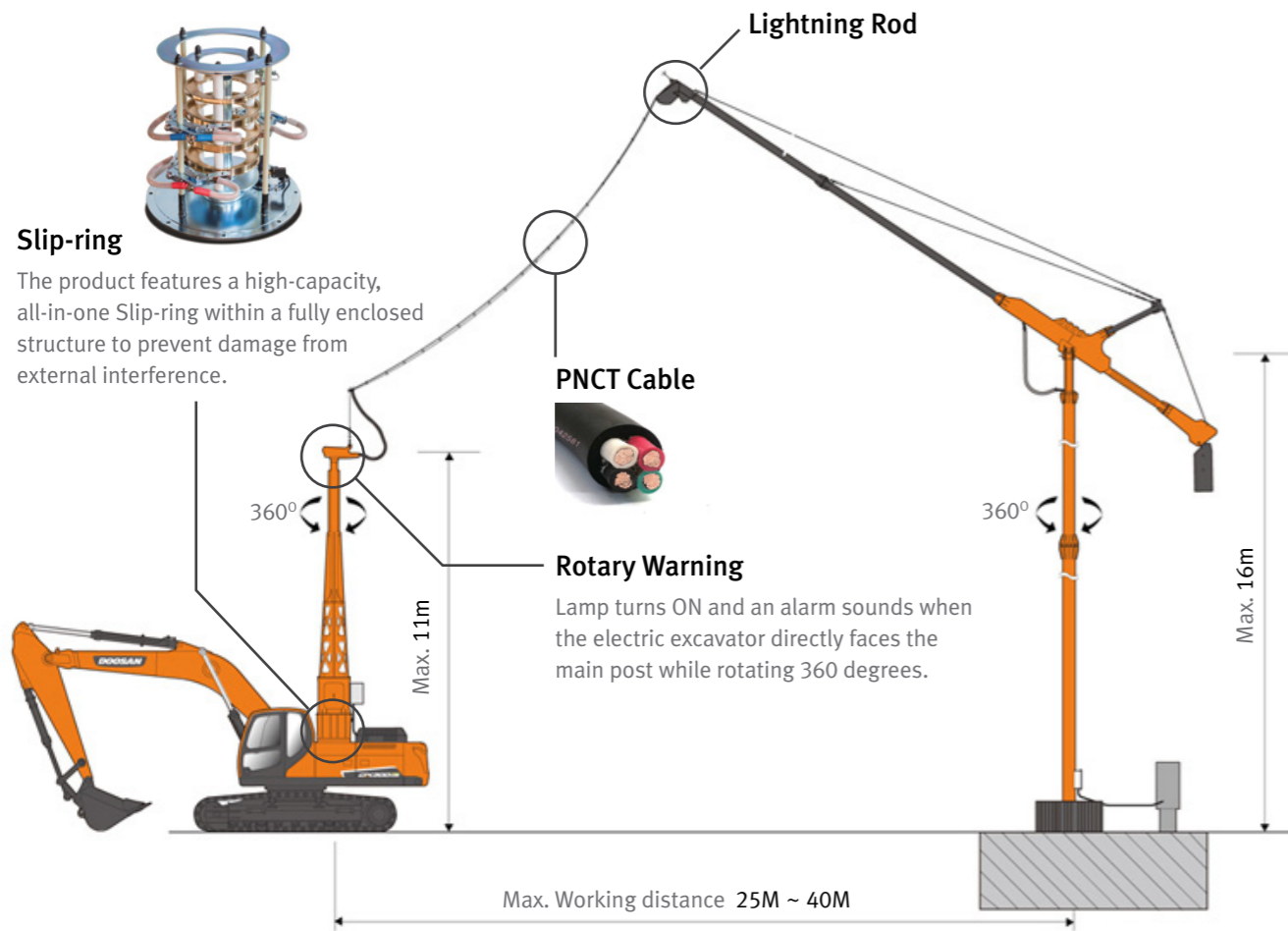
Charge-type Weight

- The angle of the boom can be adjusted according to the operational radius of the excavator (i.e. twisting of the cable can be prevented by automatically adjusting the rising angle of 60 degrees).

SAFETY

CUSTOMER SATISFACTION

Electric Excavator Safety System

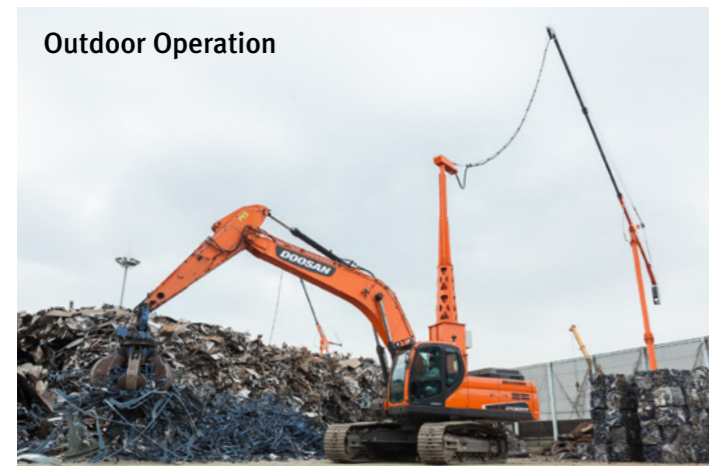


Distance Warning

The distance warning lamps turn 'ON' and a warning tones is emitted when the electric excavator moves beyond the main post to the danger distance.

Auto Power Cut-off

The power shutoff lamp turns ON and a warning sound is emitted when the electric excavator moves beyond the set safety distance at the main post.



100% Commitment to Customer Satisfaction

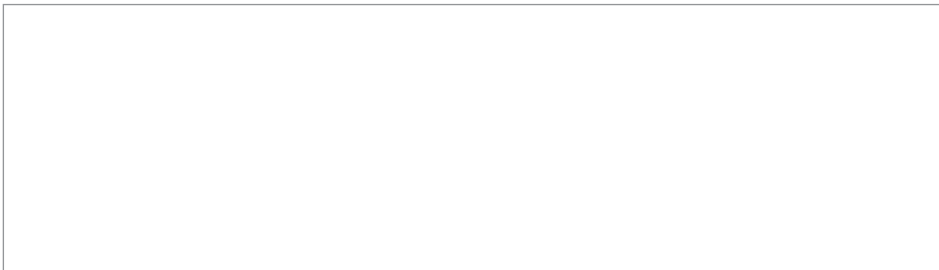


One-stop Customer Management System

- Conversion: Conversion and installation can be performed in the shortest possible time through modularization.
- Site installation: Power supplies can be developed to meet the site conditions (i.e. 20m, 30m, 40m or for indoor use). An installation manual and technical support are available.
- Legal requirements: Support can be provided to satisfy the legal requirements for electric excavator conversion/installation.
- A/S: Differentiated technical support can be provided to facilitate A/S, including providing a supply package consisting of conversion-related electrical parts, equipment, conversion system, and additional devices.

Various Attachments





Doosan Infracore Co., Ltd.
 489 (Hwasu-dong), Injung-ro, Dong-Gu,
 Incheon, Korea(22502)
www.doosaninfracore.com/ce/

Copyright 2019. Doosan Infracore. All rights reserved.

Materials and Specifications in the catalogue are subject to change without notice.